

Committee Boat Update October 2025

Self-Launching Anchor Windlass

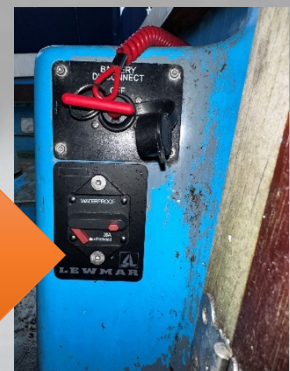
The committee boat is now equipped with a self-launch and recovery anchor windlass. This improvement means there is no longer any need to deploy the anchor manually, nor access the foredeck to carry out anchoring operations.

Note: For guidance on how to power the boat and start the engine, please refer to the Committee Boat Operating Instructions.

Initial Checks

The Windlass is an electric motor powered by the boat's 12V battery.

There is a LEWMAR breaker switch located beneath the battery master switch, and this should be left 'ON':



This is the 'ON' position, leave it ON.

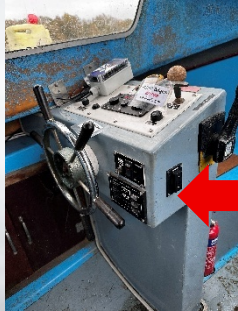
This is the 'OFF' position, push red lever up to turn ON:



Basic Operation

Operate the windlass with the engine running

The anchor is dropped and weighed using the up/down switch located on the side of the console:



Up for weigh,
Down for drop



Markers on the chain show the deployed rode length.

RED MARKERS INDICATE MAXIMUM

The anchor will tip off the bow roller and drop into the lake.

There is a RED PAINT MARK at about 17M of chain deployed. This will be plenty.

Anchor Deployment and Recovery Procedure

Dropping the Anchor

Start with the boat positioned upwind of where you want to anchor. Once in place, briefly reverse throttle the engine to make way astern, and drop the anchor. Let the boat drift back on its own until it settles at your chosen spot - this should ensure the chain lays out straight. Use perpendicular transit lines to check your location and later confirm that the boat remains in position.

Weighing Anchor

When it is time to recover the anchor, first start the engine. Give a burst of forward throttle to get the boat moving slowly forward, then start to wind in the chain. Check the engine is in neutral and complete the stowage process.

Stowing the Anchor

The anchor should be raised so that it comes onto the deck in the bow roller, resting horizontally. Be aware that the windlass clutch is designed to slip if you try to wind the anchor chain in too far, preventing damage to the equipment.

NEVER USE THE WINDLASS TO MOVE THE BOAT ON A SET ANCHOR – ALWAYS USE THE ENGINE